



---

BUILDING

---

TOGETHER

OUR CHURCH • OUR SCHOOL • OUR FUTURE





*Gracious God,*

*As we prepare to build together  
for the future, help us open our  
hearts and minds to Your loving  
presence.*

*Enable us to envision a vibrant  
school and church community  
which will respond to Your  
guidance.*

*May we always be attentive to  
the needs of our children and  
families as we work to renew  
our facilities and renew our life  
together on this campus.*

*Release our energy as we teach  
and minister in Your name.*

*Give us a spirit of wisdom,  
generosity, and perseverance so  
that our school and parish  
buildings will bring glory and  
praise to You.*

*In Your name we pray.  
Amen.*



# Our Story...

*Once upon a time, Trinity Episcopal Church was only a dream. It started in 1848 in a Victoria house with a small group of Episcopalians who shared one goal: to build a better future by spreading the Gospel throughout the community. Over time, this group has grown and countless individuals have added building block after building block to bring us to the present day.*



*We now have a well-established church community filled with leaders who fervently want to include and welcome new families. Proudly, Trinity Episcopal Church has been able to extend this welcome to countless families whose children are enrolled at Trinity Episcopal School, “The Parish School”, which was established in 1954 to help with the very same goal the Church founders had: to build a better future for our community.*

*Although the community impact from both the church and the school has been profound, this important work has come with its own set of challenges. At many points throughout history, the facilities have not been adequate and the leaders at the time had to adapt, grow, revise, and contribute their time, talents, and resources. In doing so, they were able to add the very next building block for a very important future.*

*It is now time to build again. It is time to build upon the foundation that so many others have laid for us. Our church ministry is strong, and it will be even stronger when we add welcoming spaces for our youth programs, our parishioners and our guests. Our school programs are the best in the community and they will be even better when the attention of the staff can focus more on what happens inside of the classroom instead of the physical state of the classroom.*

*We are seeking today’s leaders to help support the future goals of Trinity Episcopal Church and Trinity Episcopal School. As we follow in the footsteps of so many who have come before us, we hope you will join us in “building together” a better future for our community.*



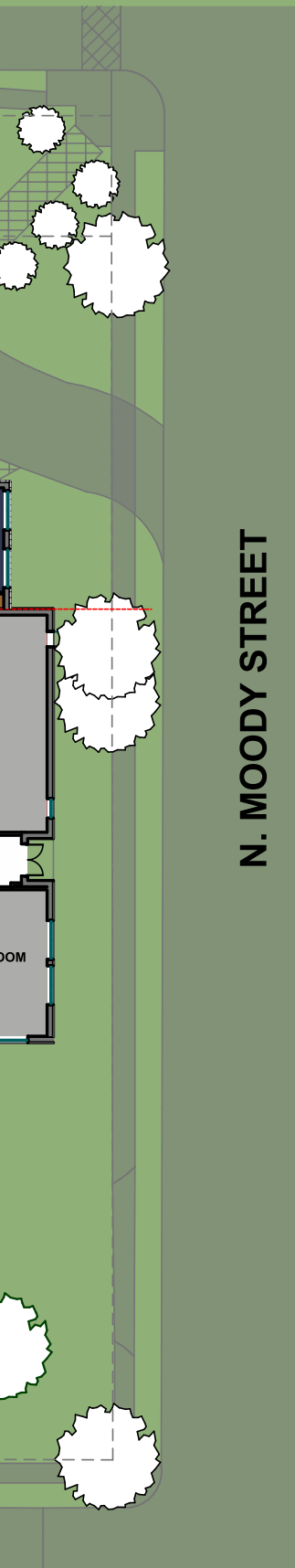


iscopal School

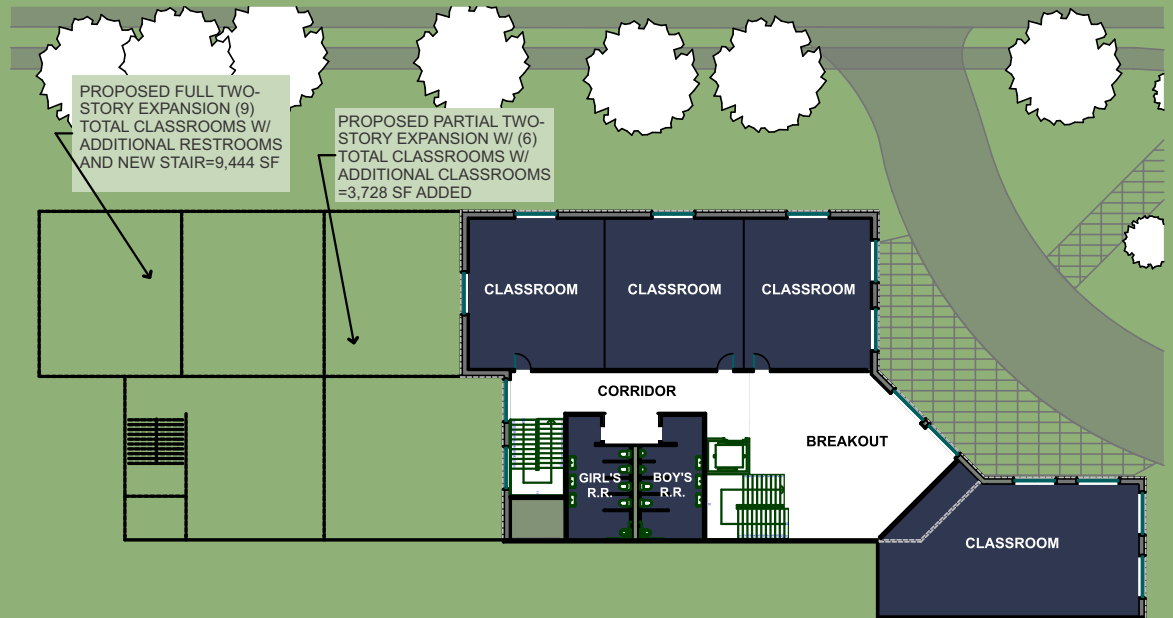


*This is the artist's rendition of the front of the two-story school addition, which would face the corner of Moody and Guadalupe Streets. The new square footage would encompass space for many grade levels as well as administrative offices and would further increase the safety and security of our campus for our students and families.*





N. MOODY STREET



## Trinity School Classroom Addition

- 12,950 square feet of new space
- New 2-story addition to replace portable buildings
- Renovate / redesign existing space
- New drop-off at Guadalupe & Moody with covered entrance
- Integrated security system at both campuses with telephone and internet
- New parking on Vine Street
- Relocate playground / green space

**ESTIMATED TOTAL COST: \$5,912,000**

### Proposed Expansion Options (cost not included above)

**Partial two-story expansion - \$1,300,000**

- 4 additional classrooms
- 3,728 additional square feet

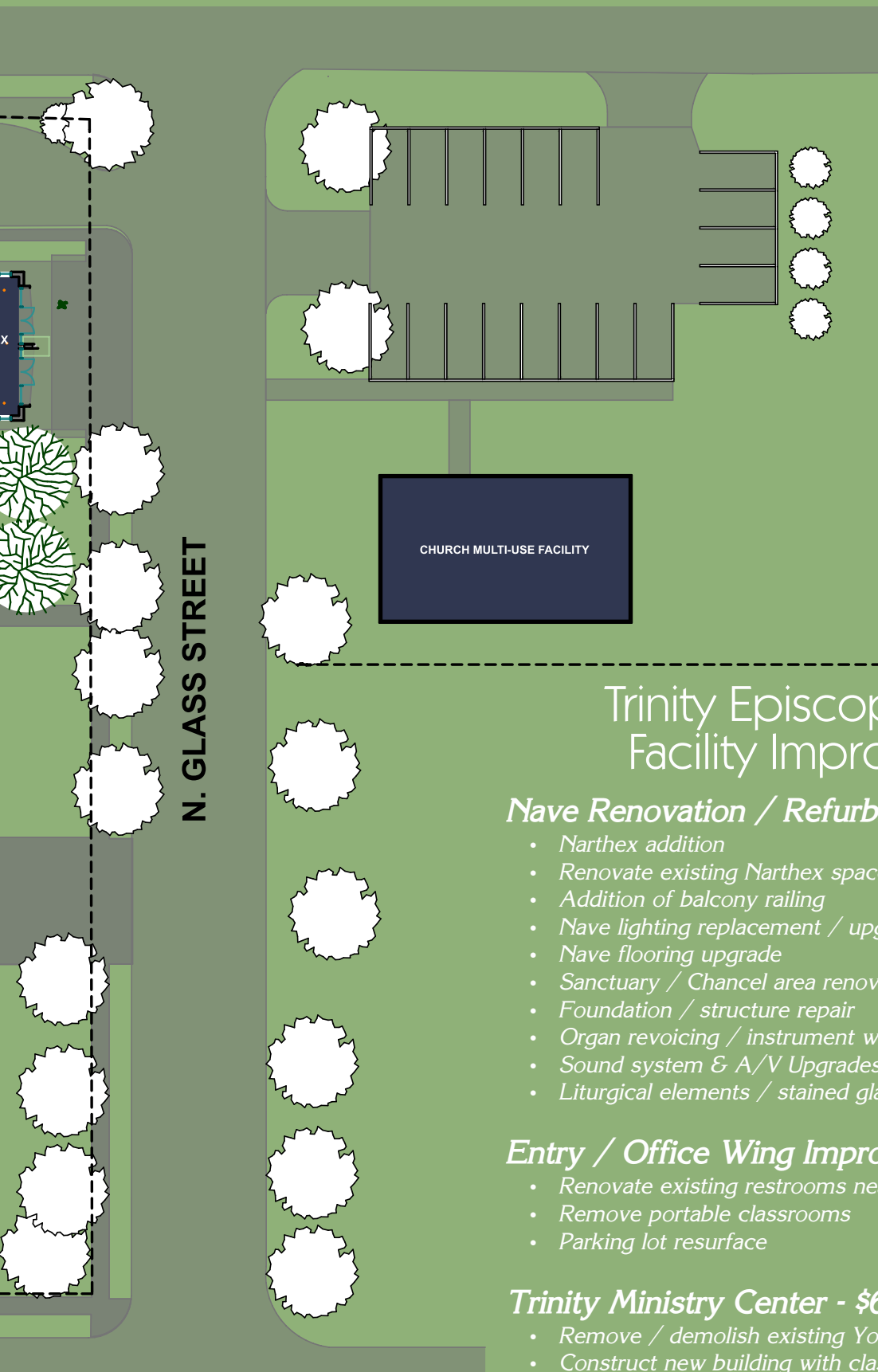
**Full two-story expansion - \$3,335,000**

- 9 additional classrooms
- 9,444 additional square feet



-  *New Construction*
-  *Redesigned Space*
-  *Existing Space*





N. GLASS STREET

## Trinity Episcopal Church Facility Improvements

### *Nave Renovation / Refurbishing - \$2,350,000*

- Narthex addition
- Renovate existing Narthex space & update restrooms
- Addition of balcony railing
- Nave lighting replacement / upgrade
- Nave flooring upgrade
- Sanctuary / Chancel area renovation
- Foundation / structure repair
- Organ revoicing / instrument work
- Sound system & A/V Upgrades
- Liturgical elements / stained glass repair

### *Entry / Office Wing Improvements - \$287,000*

- Renovate existing restrooms near classrooms
- Remove portable classrooms
- Parking lot resurface

### *Trinity Ministry Center - \$670,000*

- Remove / demolish existing Youth House
- Construct new building with classrooms & kitchenette
- Add parking

*ESTIMATED TOTAL COST: \$3,307,000*

*BUILDING TOGETHER TOTAL COST: \$9,219,000*



*It is such an exciting time at Trinity Episcopal School. We are experiencing a period of unprecedented growth and fellowship. More than 200 families call our school their academic home and we are thrilled that more and more folks recognize our commitment to excellence and wish to join our Trinity family.*

*Working together with our church family, our goal is to create a warm, inviting, and safe space for our students to learn and grow. Right now, we are housed in a combination of buildings: one that is only a decade old; one that is almost 50*

*years old and in desperate need of updating; and a portable building that is a temporary answer to our lack of space. This campaign will allow us to provide for our educational needs.*

*Some of the capital campaign is specifically geared towards ensuring that our campus is as safe as possible for our students and our faculty. We believe that we owe this to our school families and our church families both.*

*I hope that you will join us on this journey. Together, our whole is greater than the sum of our parts. We are excited about partnering with our church family to provide a better tomorrow for our families now and in the decades to come.*

*Sincerely,  
Kristy Nelson, Interim Head of School*







Our Capital Campaign theme is “Building Together.” The Apostle Paul wrote in his letter to the Corinthians, “For we are co-workers in God’s service; you are God’s field, God’s building.” Those words beautifully sum up the work we do as a church and school. We are working together to give children and families building blocks to thrive in the present and meet the future. The theme honors our history together, and it also reflects that we are a future-oriented people, always working in God’s service to inspire children to learn and to build a community where everyone is known, welcomed, and loved.

The time has come to embark on a capital campaign in order that we might honor our heritage, and empower our future. We are fortunate to have strong capital campaign ministry teams that represent the church and school. These teams, along with the vestry and the rector, the interim head of school and the school board, have worked diligently to shepherd us in this process. Through their leadership and through consultation with the entire school, congregation, and members of our neighborhood a wide variety of voices have been honored and heard.

We have a rich history at Trinity Episcopal Church and Trinity Episcopal School. For over 60 years we have provided an excellent education for children and we have served in Victoria as a vital and growing church community. We invite you on this journey of “Building Together.” Join us as we celebrate and honor our church, our school, and our future together.

*Joy of the Lord,  
Fr. Jim*



---

# BUILDING TOGETHER

---

OUR CHURCH • OUR SCHOOL • OUR FUTURE

## Space Planning Committee

Robert W. Briggs  
Drew Dixon  
Susan Cain  
Jill Fox  
Byron Burris  
Eric Heinhold  
Donald Elder  
Kelly Henke  
Mike Brown  
The Reverend Patricia Riggins  
Duane Roth  
The Reverend Jim Kee-Rees  
Kristy Nelson

## Building Committee

Tommy Taylor, *Chairman*  
Colin Fry, *Co-Chairman*  
David Boyd  
Robert W. Briggs.  
Cheryl Brumley  
Richard Chapman  
Fred Fry  
Penni Gietz  
The Reverend Jim Kee-Rees  
Wendy McHaney  
Kristy Nelson  
Dennis Patillo  
David Robinson  
Cindy Rogers  
Laurie Shamma  
Kay Walker

## Campaign Committee

Robert W. Briggs., *Co-Chairman, School*  
Cheryl Brumley  
Penni Gietz, *Co-Chair, Church*  
The Reverend Jim Kee-Rees  
Kristy Nelson  
Dennis Patillo  
Tommy Taylor  
Kay Walker, *Co-Chair, Church*

## Campaign Finance Committee

David Robinson, *Chairman*  
Doug Anderson  
Robert W. Briggs  
Richard Chapman  
The Reverend Jim Kee-Rees  
Kristy Nelson  
Dennis Patillo

## Architect

**Heimsath**  
ARCHITECTS 

Trinity Episcopal Church  
1501 North Glass Street • Victoria, Texas 77901  
Phone: 361-573-3228

[TrinityWelcomesYou.org](http://TrinityWelcomesYou.org)



Trinity Episcopal Church Victoria

Trinity Episcopal School  
1504 North Moody Street • Victoria, Texas 77901  
Phone: 361-573-3220

[TESVictoria.org](http://TESVictoria.org)



Trinity Episcopal School Victoria